

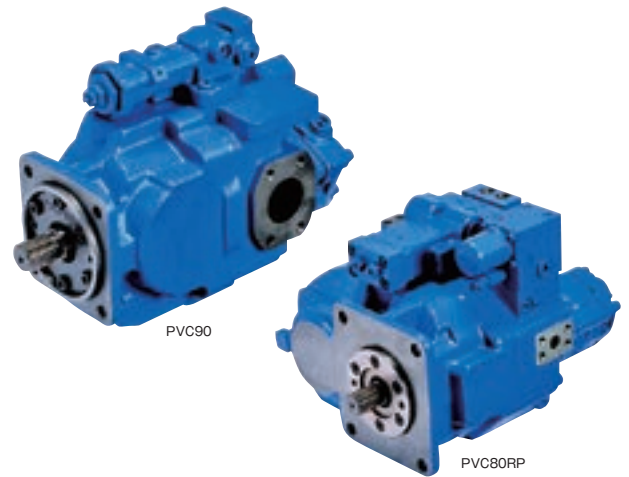
PVC/PVDH

Main application

Piston pump for excavator

Features

- 1.High reliability and longevity
 - Cylinder block support, valve plate floating mechanism.
- 2.Remarkably low noise
 - Integrated structure of the cylinder block and shaft.
- 3.High efficient, self-priming performance
 - Optimal hydraulic balance of valve plate
 - Radial layout of pistons
- 4.Various controls suited for customer's needs
 - Constant horsepower control, Total horsepower control, Variable horsepower control, Negative flow control, Electric flow control

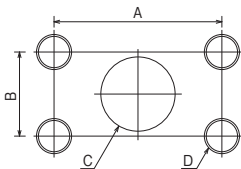


Specification		Single pump		Double pump (Parallel type)		Double pump (Tandem Type)
		PVC65	PVC90	PVC80RP	PVC110RP	PVDH165
Motor displacement	cm ³ /rev	63	90	80×2	110×2	165×2
Rated Pressure	MPa	24.5	34.3	34.3	34.3	35
Peak pressure	MPa	27.4	37.2	41.2	41.2	41.2
Max.speed of self-priming	min ⁻¹	2,600	2,400	2,400	2,300	2,250
Max.input torque	N·m	555	655	655*1	1,015*2	1,200
Unit weight	kg	33.5	45	102	125	185
Applicable excavator weight	ton	4~6	7~11	15~17	20~24	30~36

*1: 499N-m in case of loading driven pump only. *2: 588N-m in case of loading driven pump only.

Outline dimensions

Delivery port

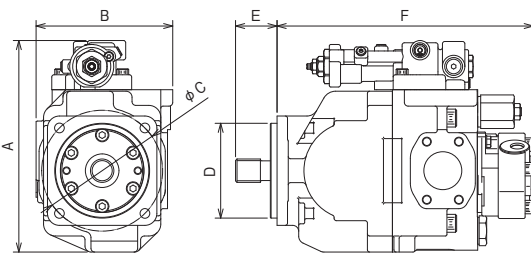


	PVC65	PVC90	PVC80RP	PVC110RP	PVDH165
A	50.8	50.8	50.8	57.1	57.1
B	23.8	23.8	23.8	27.8	27.8
C	Φ19	Φ19	Φ19	Φ25	Φ25
D	M10	M10	M10	M12	M12

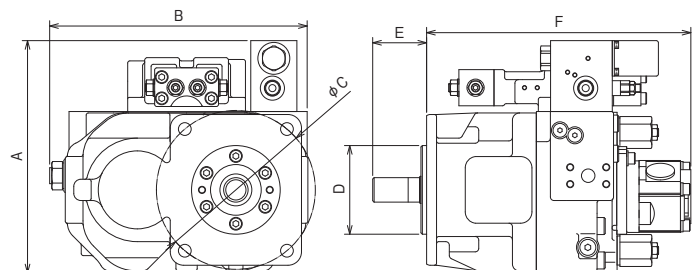
Suction port

	PVC65	PVC90	PVC80RP	PVC110RP	PVDH165
A	77.8	77.8	88.9	106.4	106.4
B	42.9	42.9	50.8	61.9	61.9
C	Φ50	Φ50	Φ63.5	Φ76	Φ76
D	M12	M12	M12	M16	M16

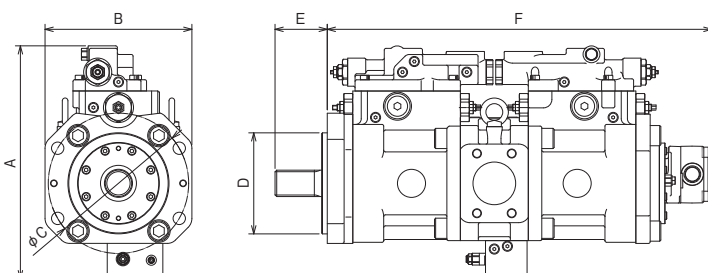
Single pump



Double pump (Parallel type)



Double pump (Tandem Type)



	PVC65	PVC90	PVC80RP	PVC110RP	PVDH165
A	270	284	304	331	416
B	158	183	364	439	261
C	181	162	112	125	250
D	127	127	125	160	180
E	56	56	76	78	93
F	187	342	354	405	685